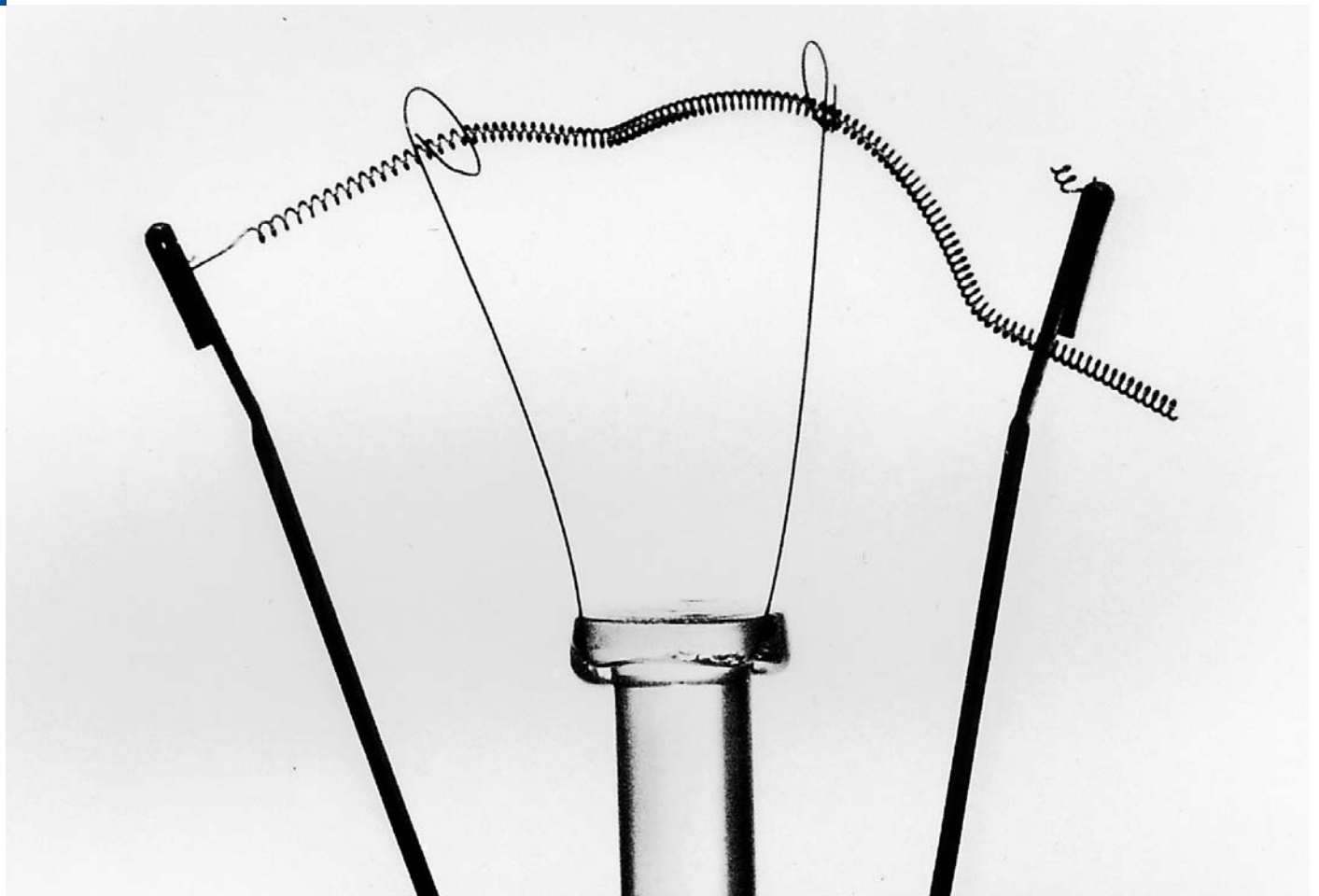
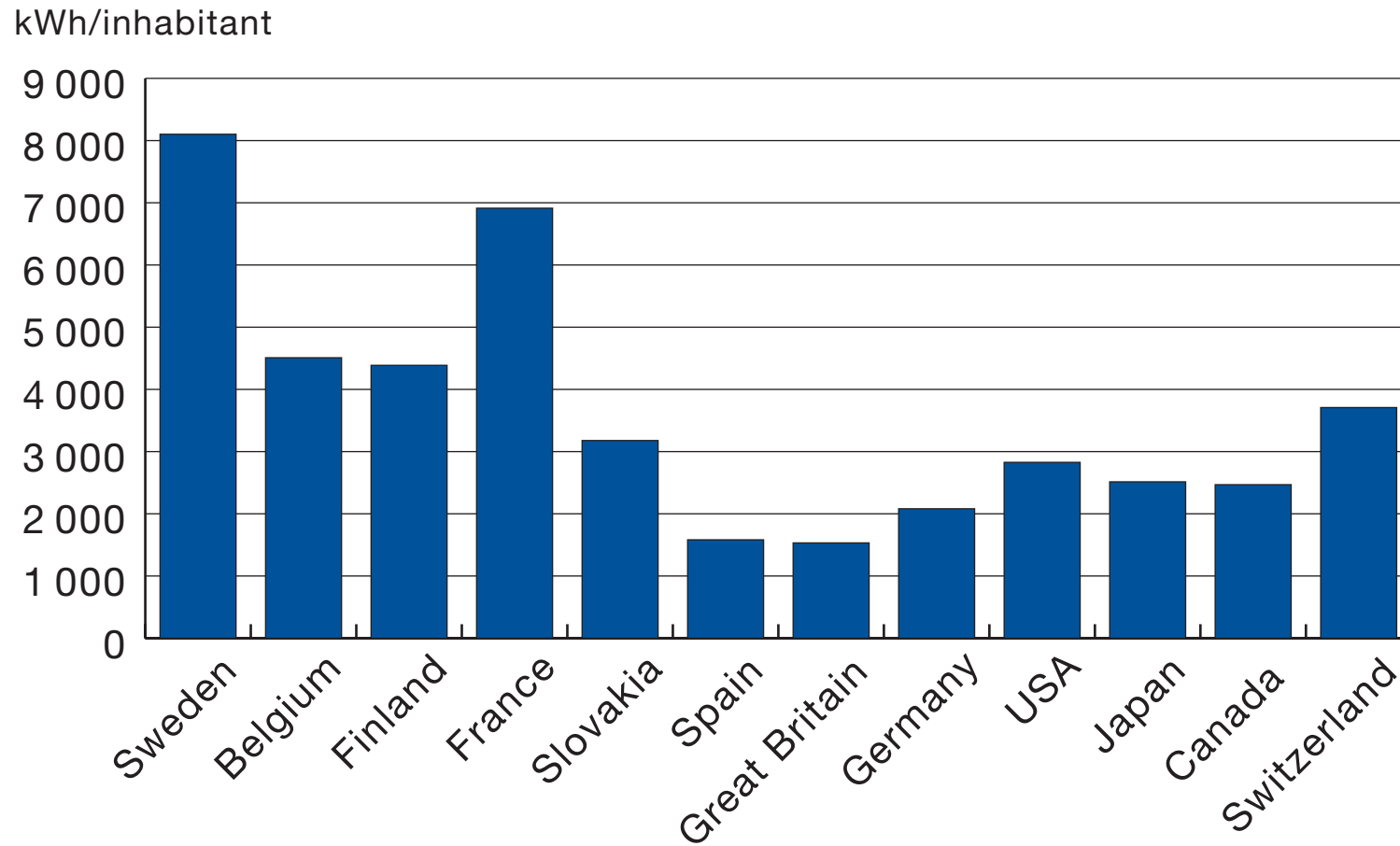


The Energy Market 2004



Swedish Energy Agency

Electrical energy generated by Swedish nuclear power per inhabitant in 2001 compared to other countries



Source: Electricity Information 2003, IEA.

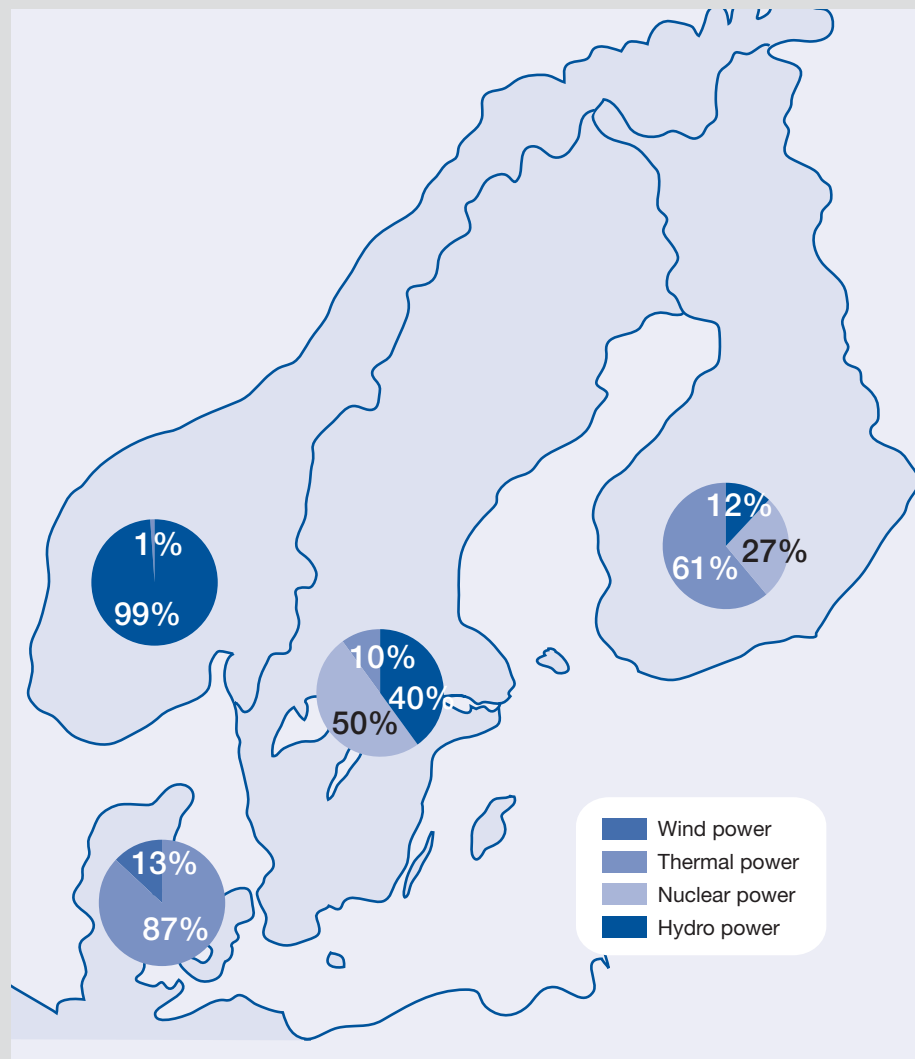
Electrical energy generated in the Nordic countries, TWh, and per capita electricity consumption in 2003, kWh per inhabitant

NORWAY 107.2 TWH
 Net imports 7.9 TWh
 Per capita electricity consumption 25 193 kWh

SWEDEN 132.3 TWH
 Net imports 12.9 TWh
 Per capita electricity consumption 16 207 kWh

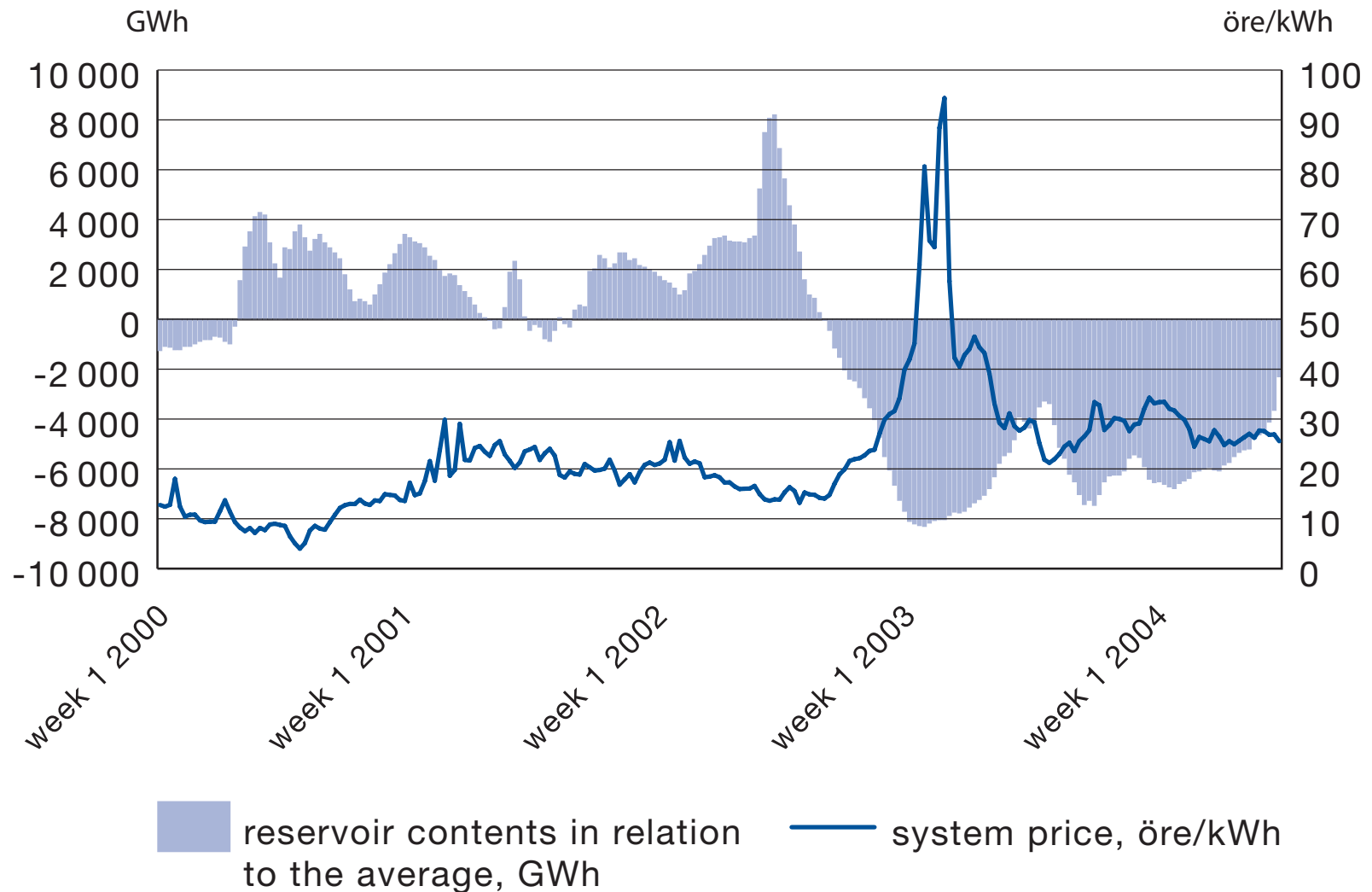
DENMARK 43.6 TWH
 Net imports 8.5 TWh
 Per capita electricity consumption 6 536 kWh

FINLAND 79.9 TWH
 Net imports 4.8 TWh
 Per capita electricity consumption 16 226 kWh



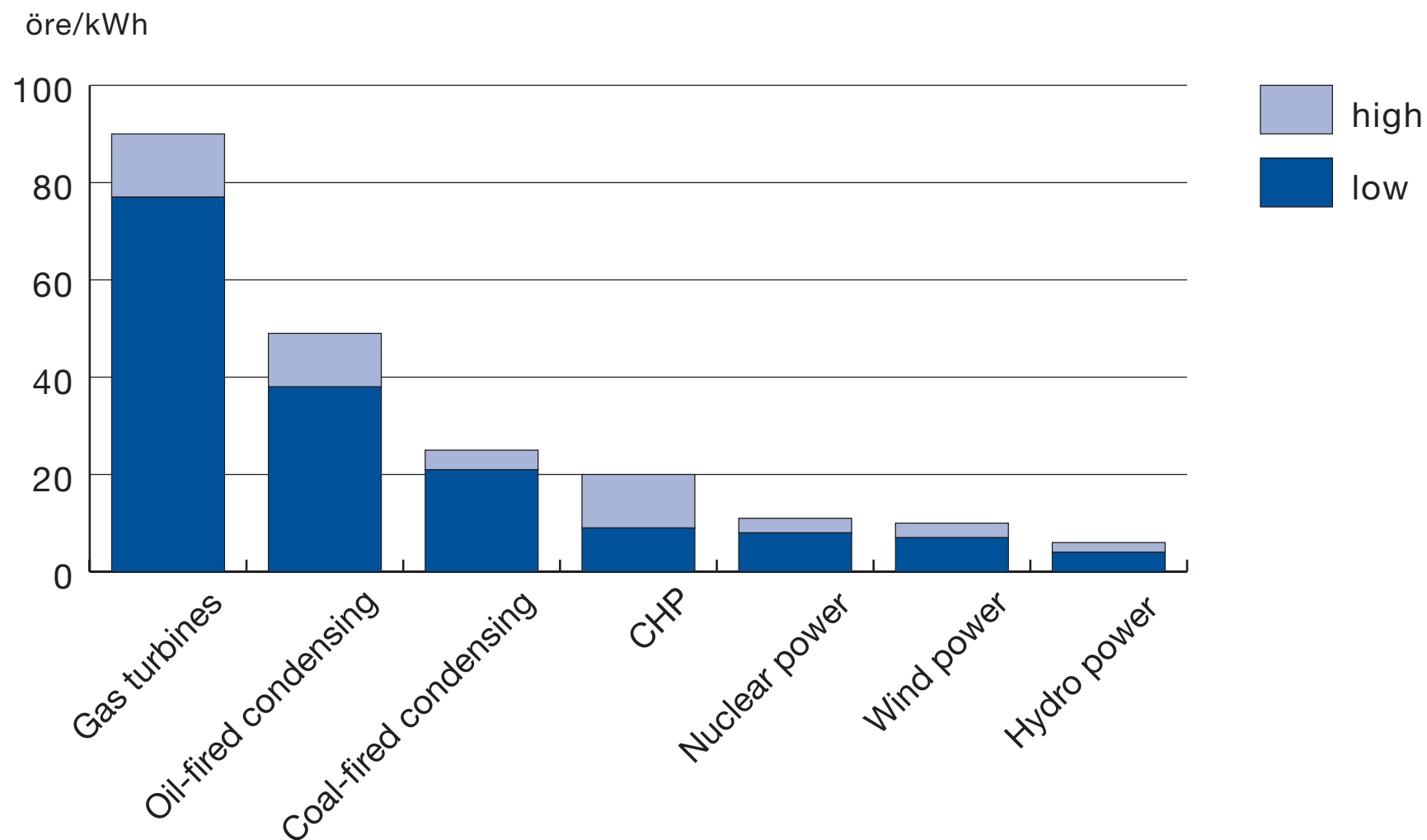
Source: Nord Pool

Link between the Nord Pool system price and the water reservoir contents



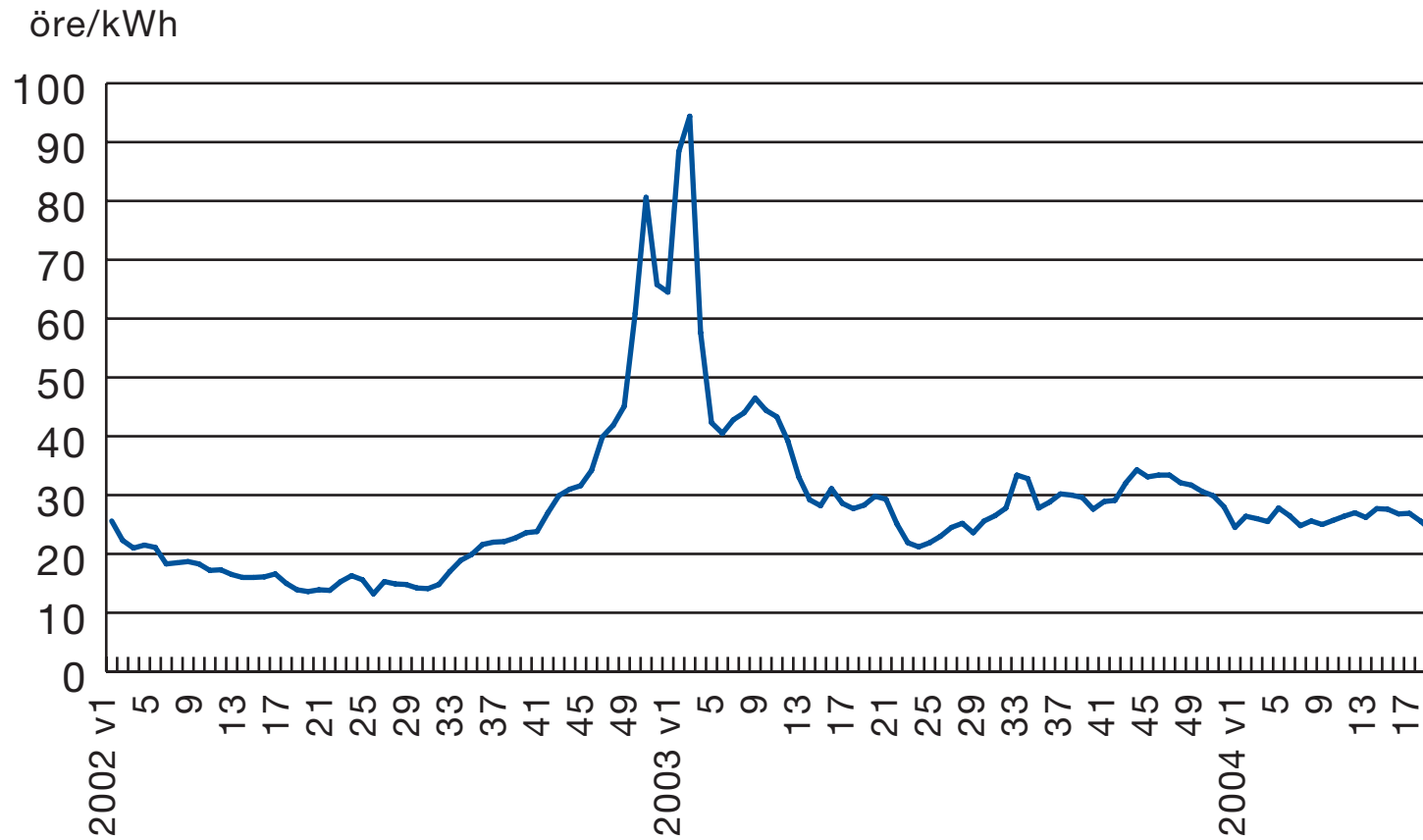
Source: Nord Pool

Variable cost of power generation in the Nordic countries in 2003, öre per kWh



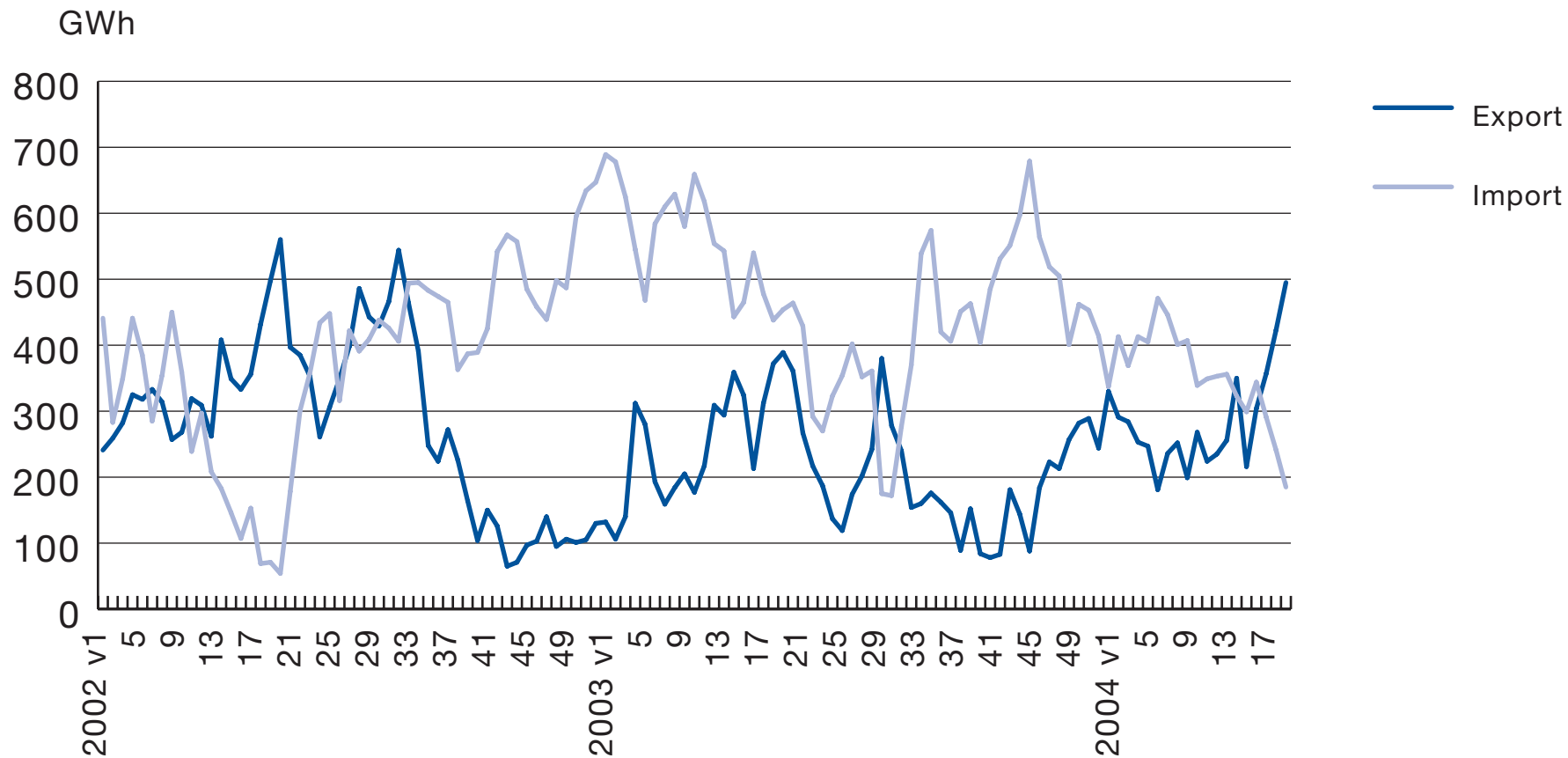
Sources: Swedish Energy Agency's processing of information from Elforsk report 03:14, Electricity from new areas in 2003 and fuel prices from ICR Coal statistics Monthly, April 2004, and the Swedish Energy Agency price sheet for biofuels, peat, etc., No. 1/2004.

System prices at Nord Pool between January 2002 and April 2004, öre per kWh



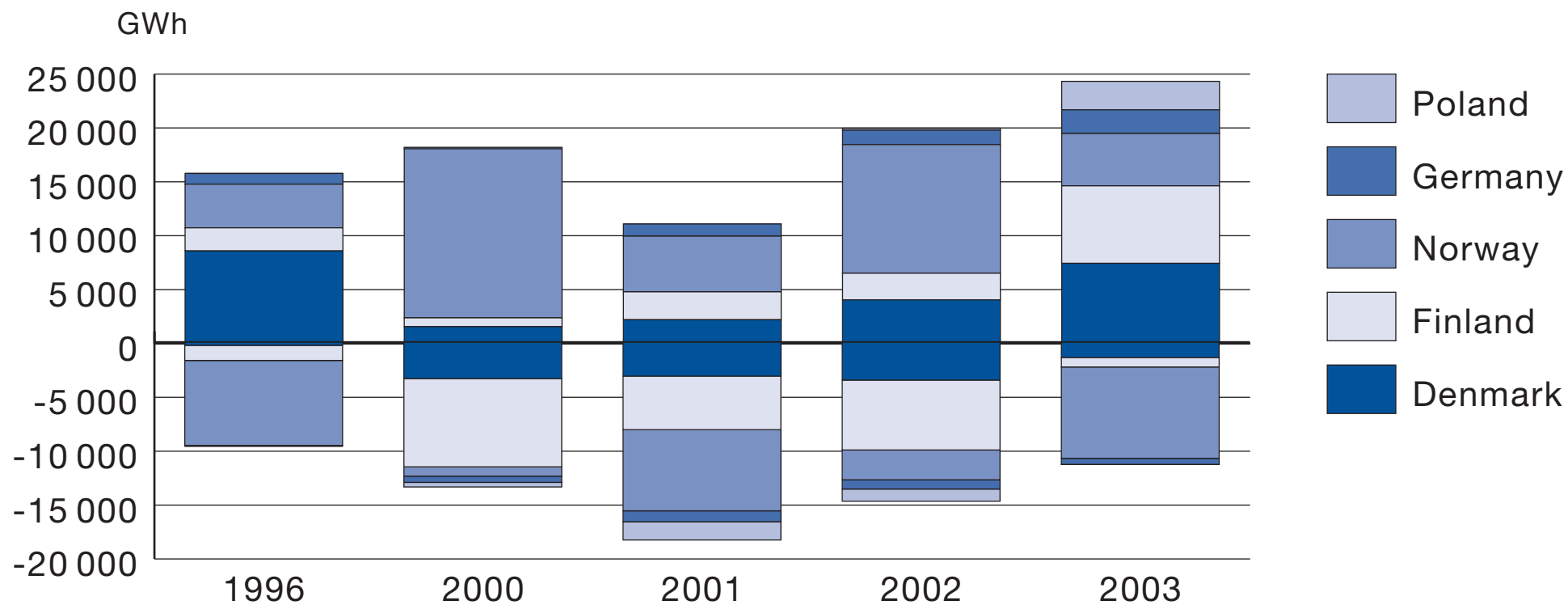
Source: Nord Pool

Sweden's trade in electricity with foreign countries between January 2002 and April 2004, GWh per week



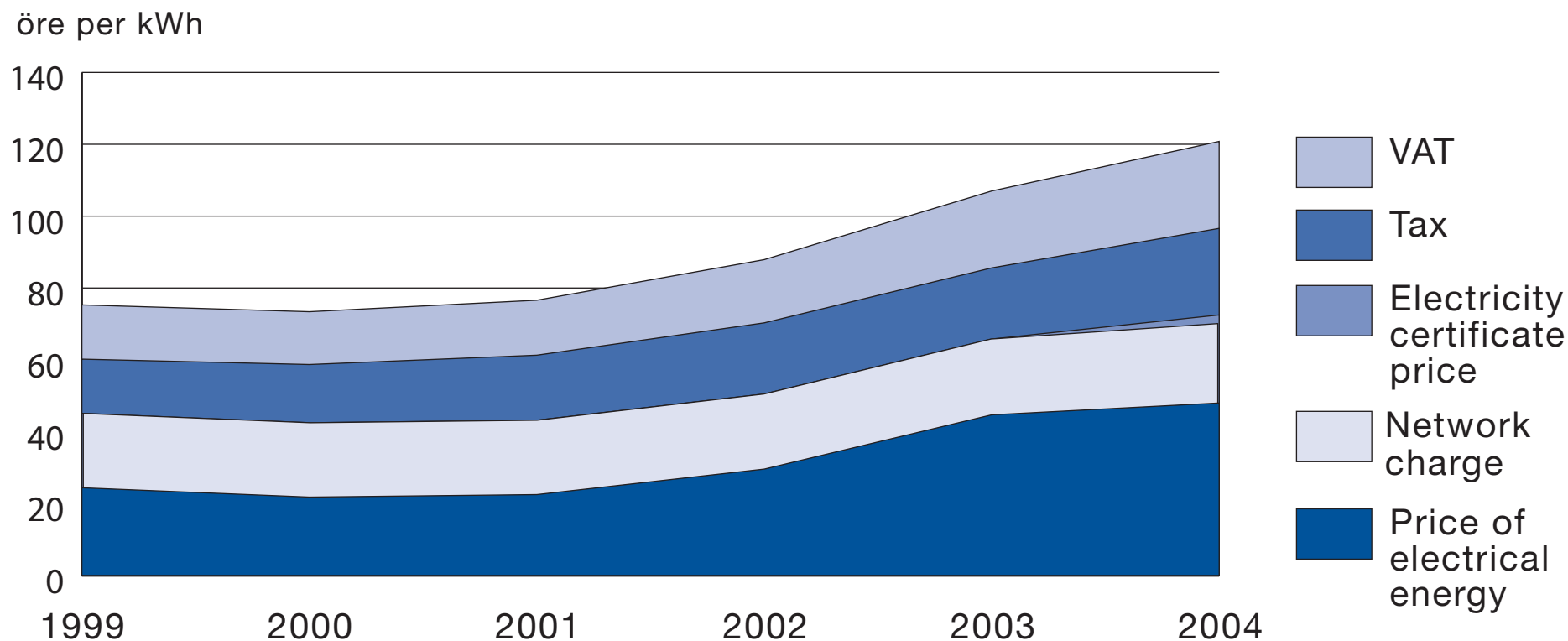
Source: Swedenergy

Sweden's electricity imports and exports, GWh



Source: Swedenergy

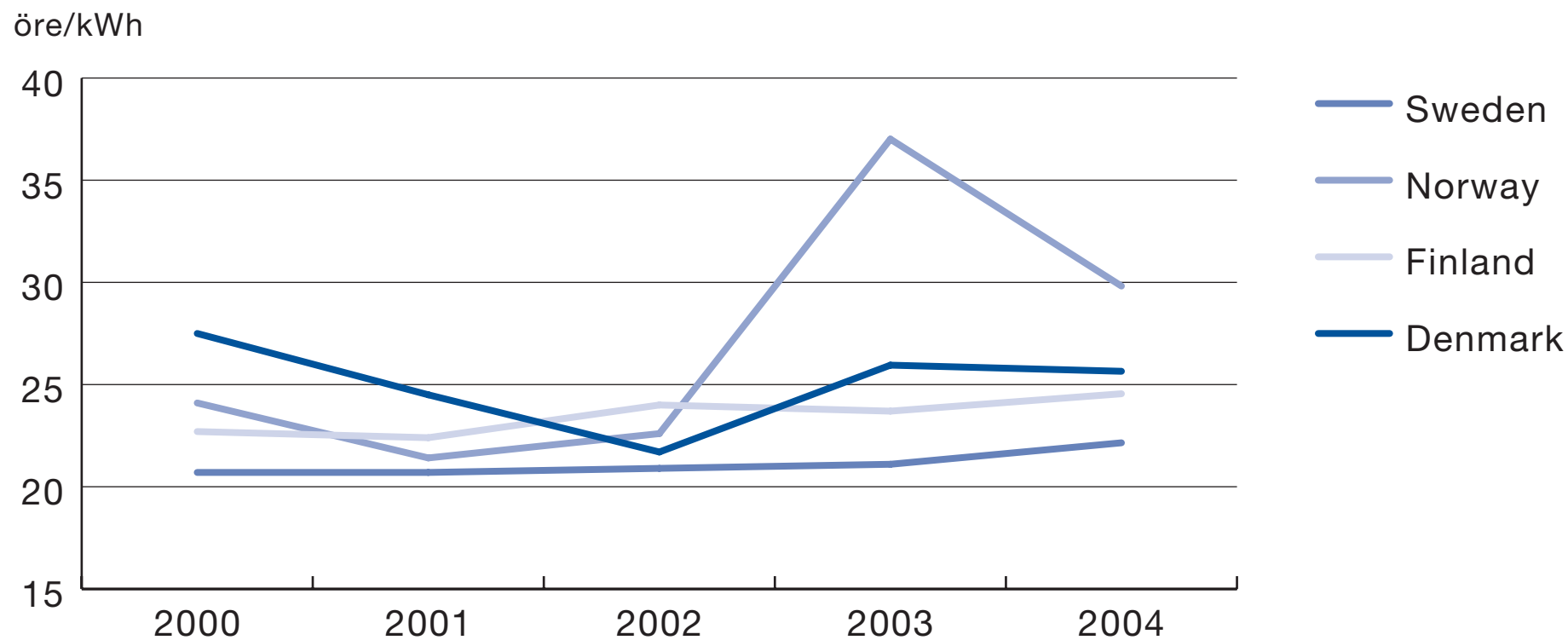
Electricity price to a typical domestic customer¹ in relation to tax, VAT, network charge and electricity certificate price, öre per kWh



1 Single-family house with electric heating in southern Sweden

Source: Statistics Sweden

Network charges in the Nordic countries¹ payable by a typical domestic customer², öre per kWh



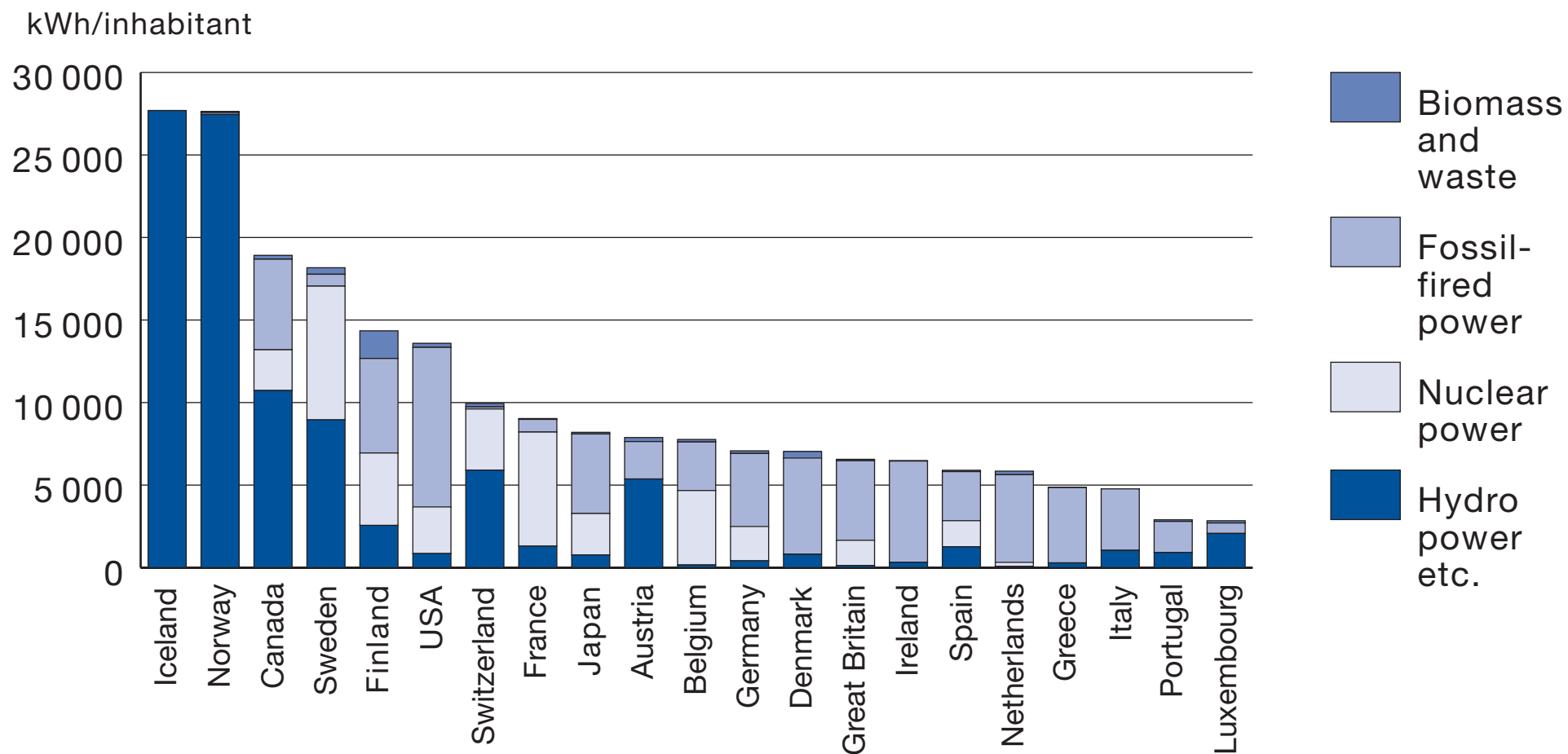
¹ Excluding Iceland

² "Single-family house with electric heating", 20 000 kWh, median

Source: The Norwegian Water Resources and Energy Directorate (NVE), www.nve.no; Finnish Electrical Energy Association Adato Energia Oy, www.energia.fi; Association of Danish Energy Companies, www.danskenergi.dk

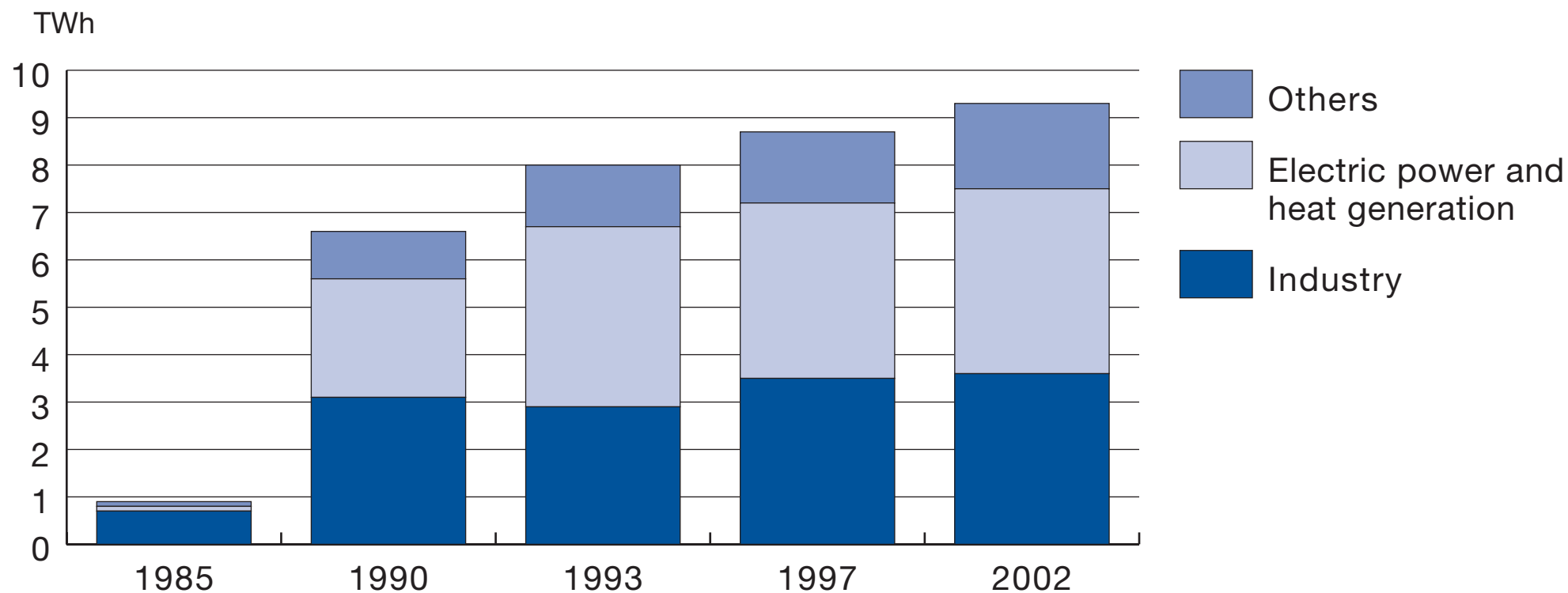


Electricity generation per capita, with relative distribution by different power sources in 2001, kWh



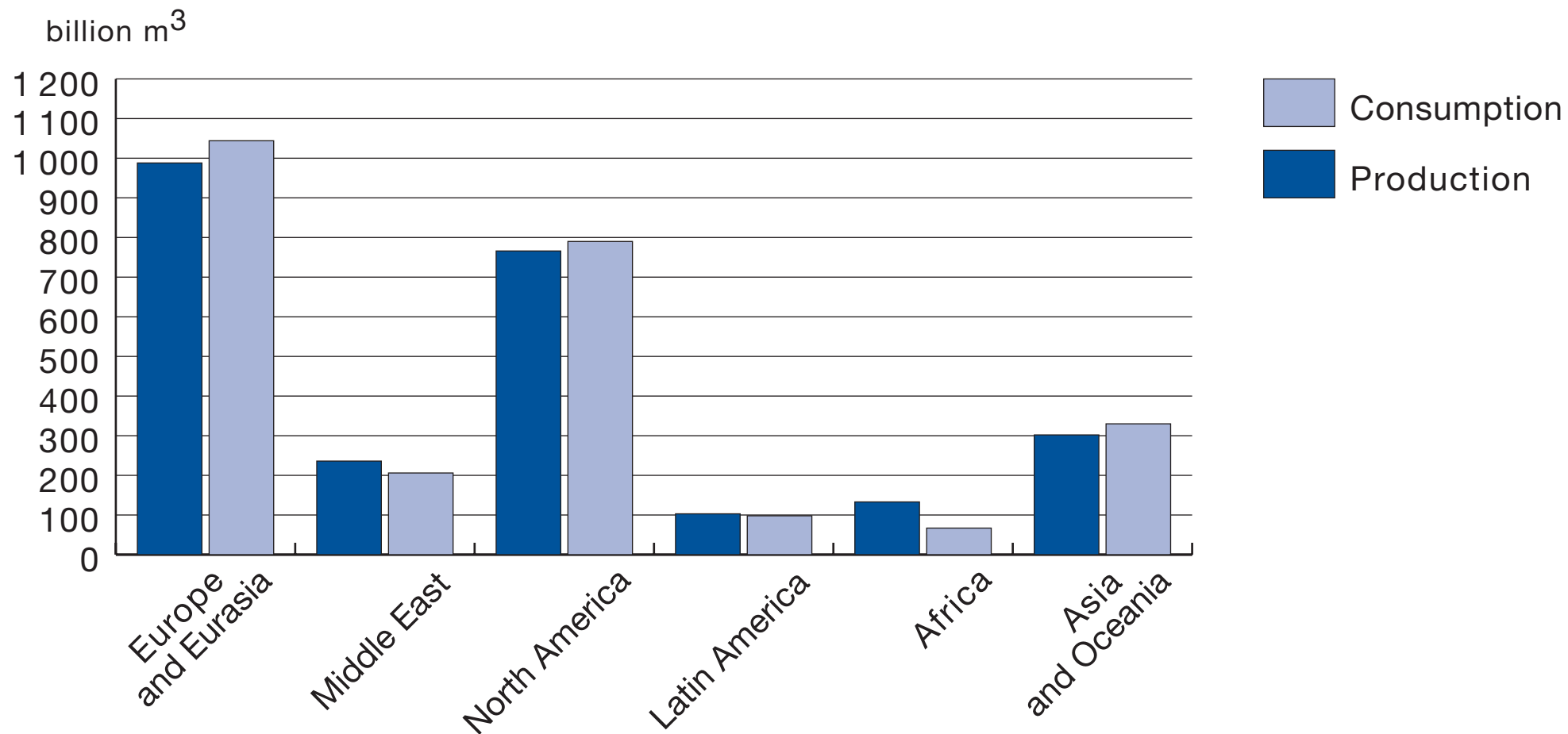
Source: Electricity Information 2003, IEA

Consumption of natural gas in Sweden distributed by user sectors, TWh



Source: Information received from *Energy in Sweden*, Statistics Sweden (2002), and *Nova Naturgas AB* (1985 – 1997) processed by the ÅF Group.

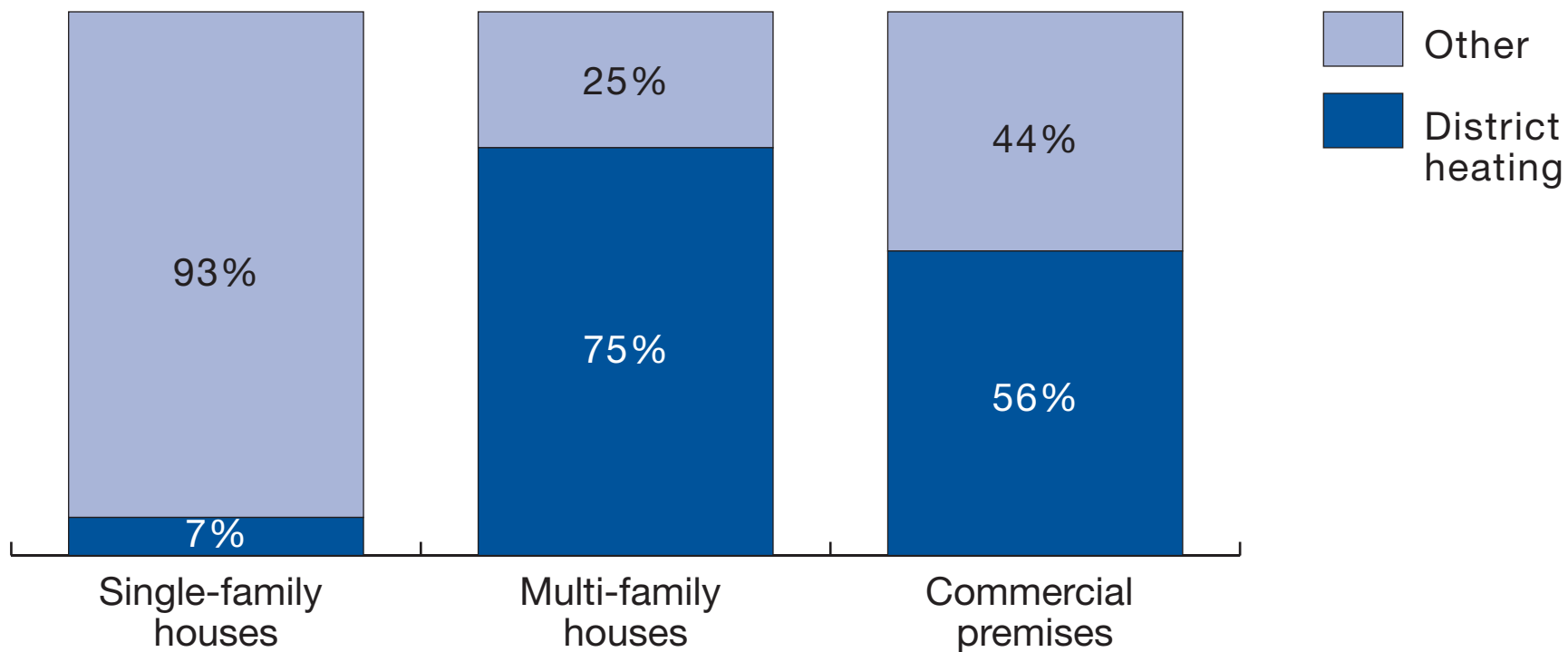
Production and consumption per region in billion cubic metres



Note: Eurasia denotes countries formerly in the USSR.

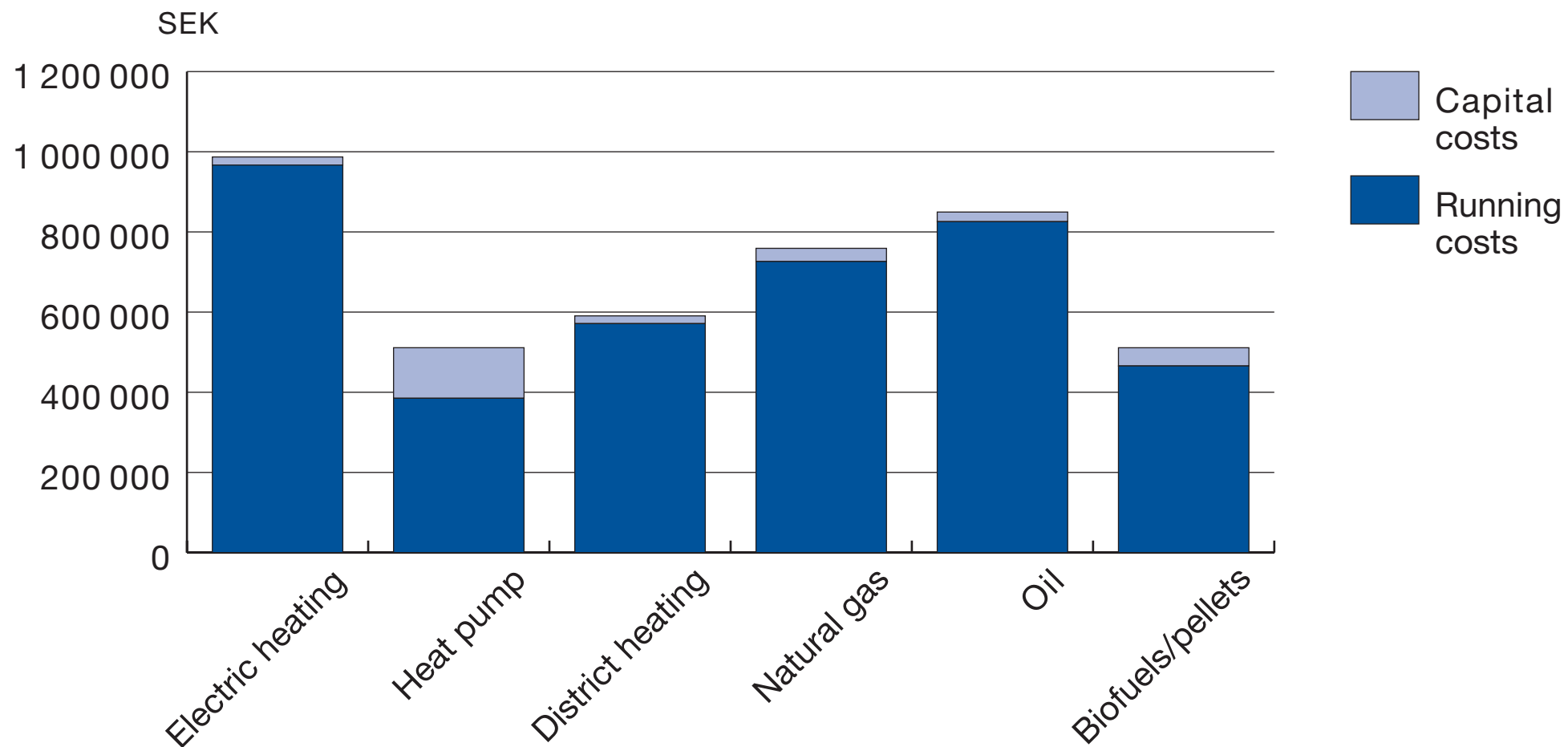
Source: BP Statistical Review 2003

District heating deliveries to various user categories, 2002



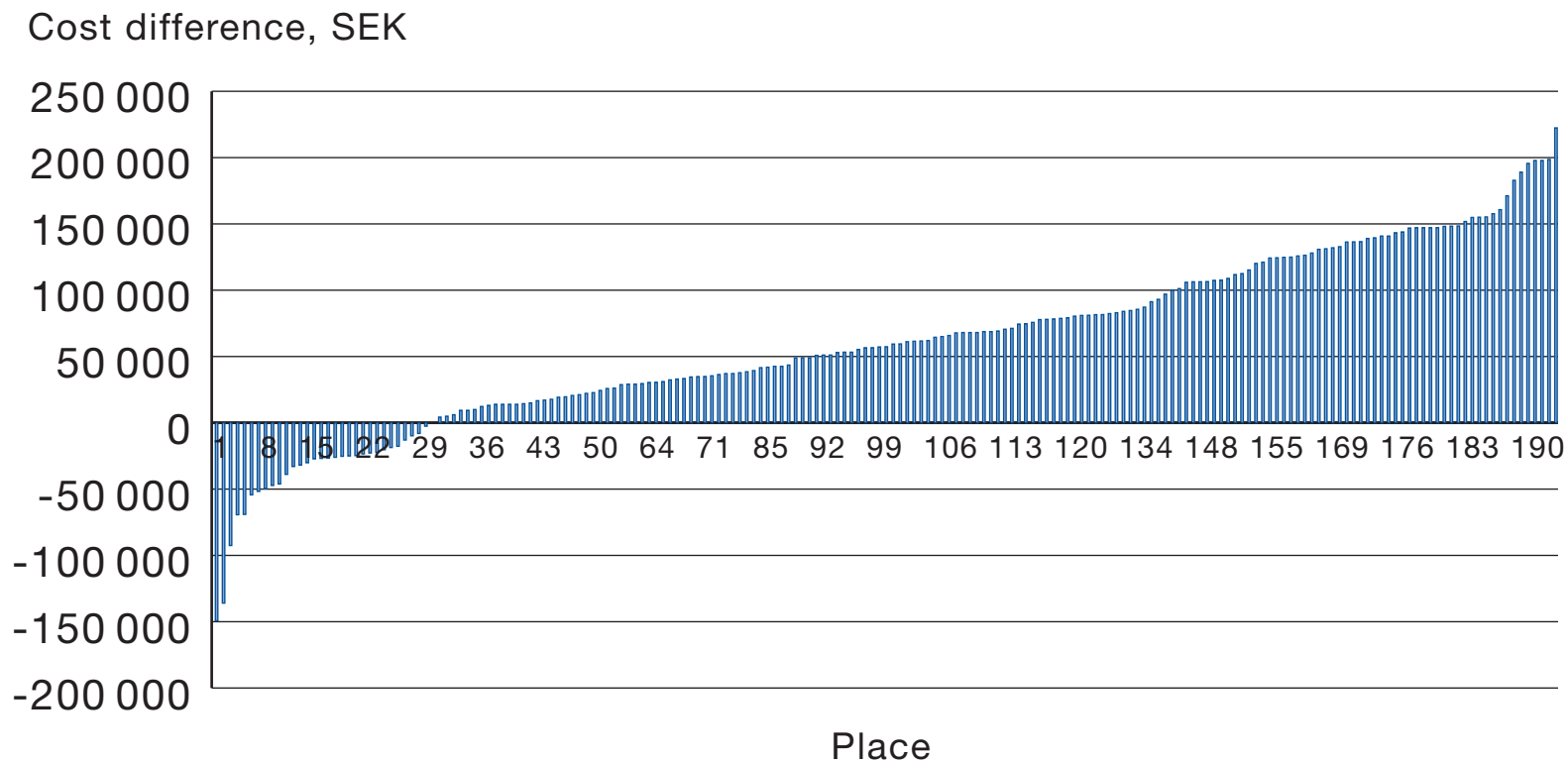
Source: Statistics Sweden. District Heating Association 2002

Annual running costs of heating and annual capital cost at 1 000 MWh per year in 2003



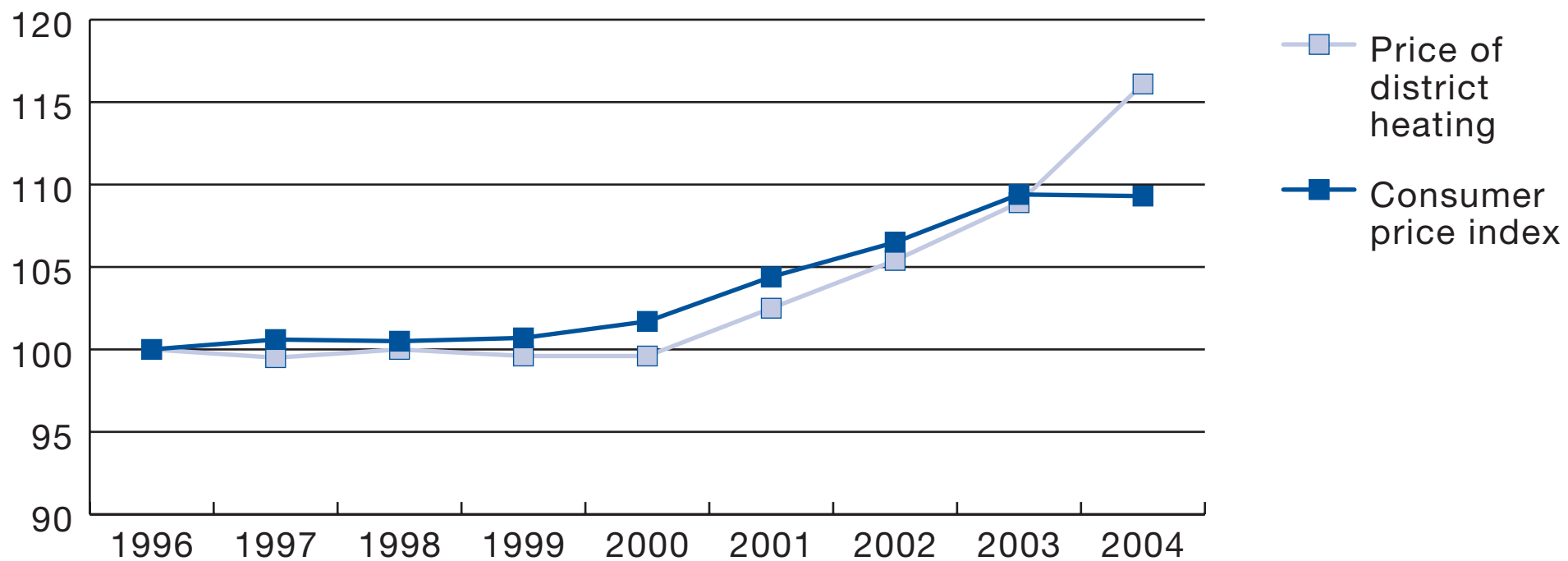
Source: Swedish Energy Agency

Cost difference of changing over from district heating to biofuel pellets in 2003



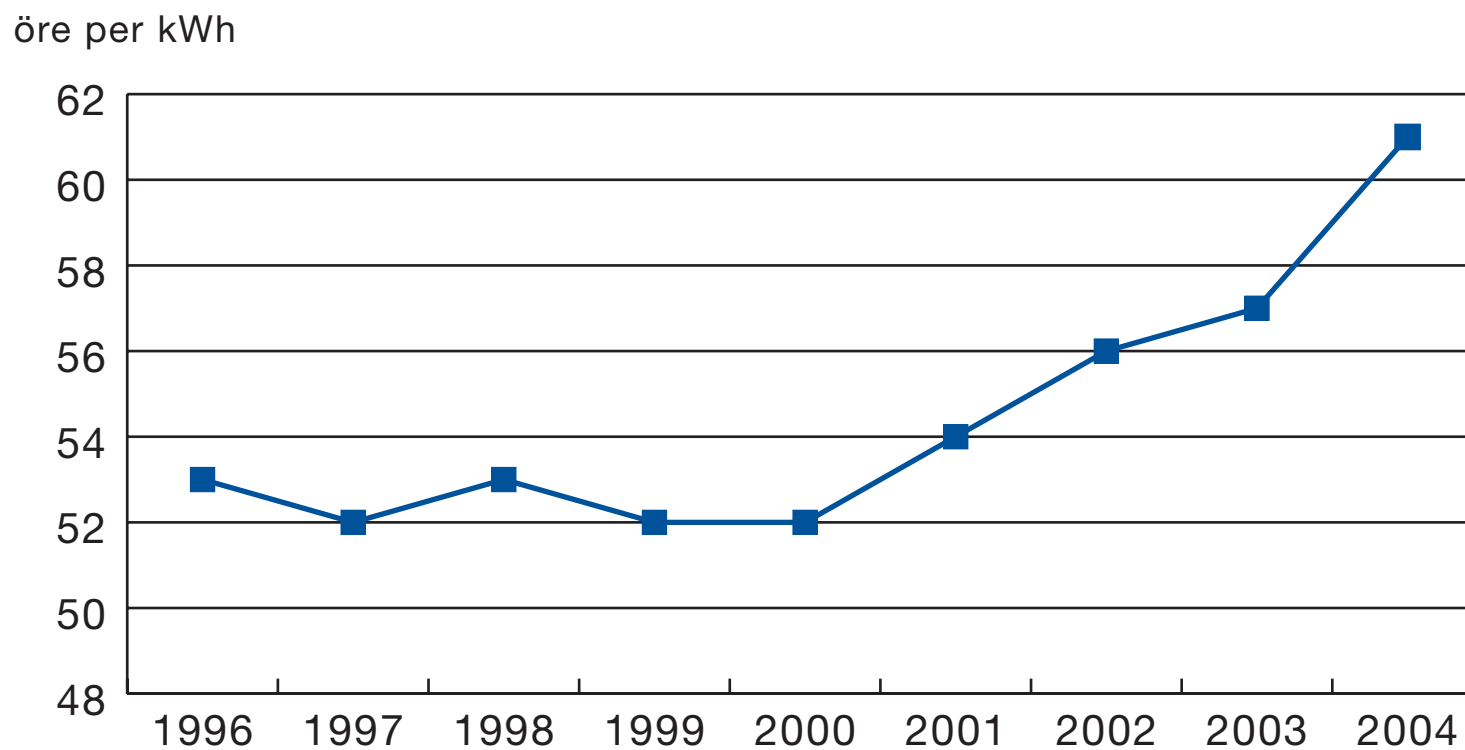
Source: Calculations by the Swedish Energy Agency

Price development for an annual energy delivery of 193 MWh compared to the consumer price index



Source: Swedish District Heating Association and Statistics Sweden

Price development between 1996 and 2004 for an annual energy delivery of 193 MWh, öre per kWh



Source: Swedish Energy Agency